



Installation manual

Van flyscreen door

Volkswagen T5/T6

Right-hand steered (left-hand drive) version



Contents



- Entry step
- Cassette and pullbar
- Top profile
- Panel
- 6x Screw 2,9 x 9,5mm (Type 1)

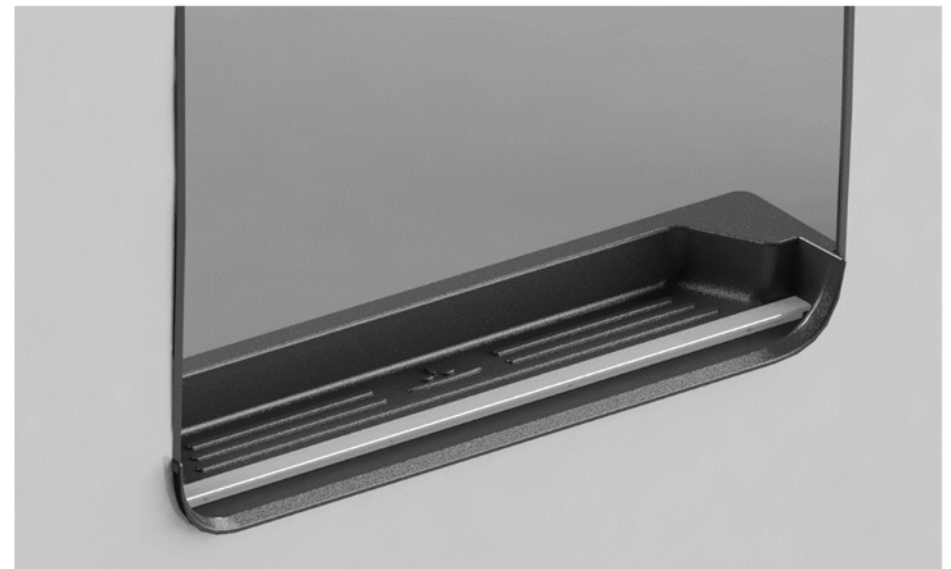
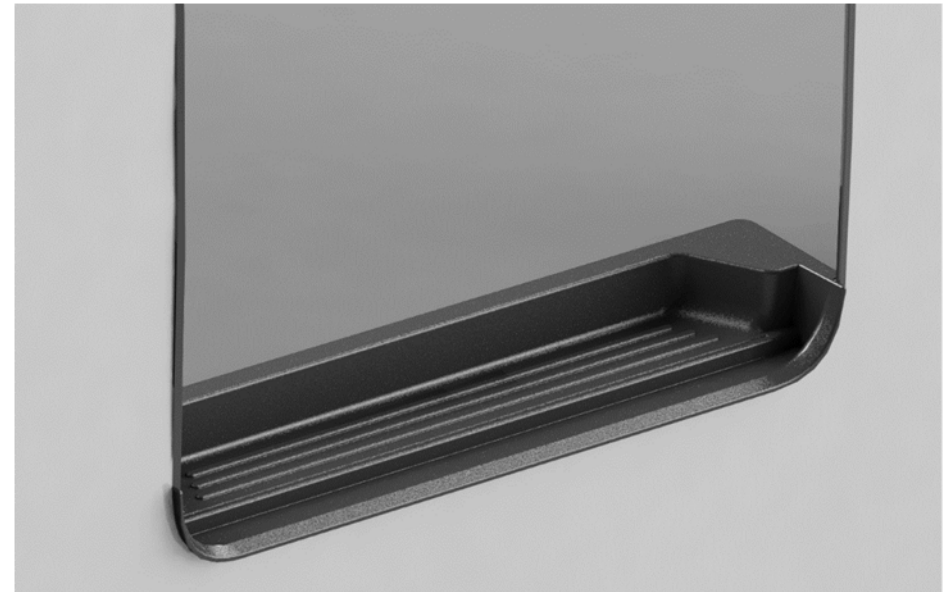


Items needed

- Drill
- Tape measure
- Allen key 2mm
- Screwdriver (PH2)
- Drill 2,5mm

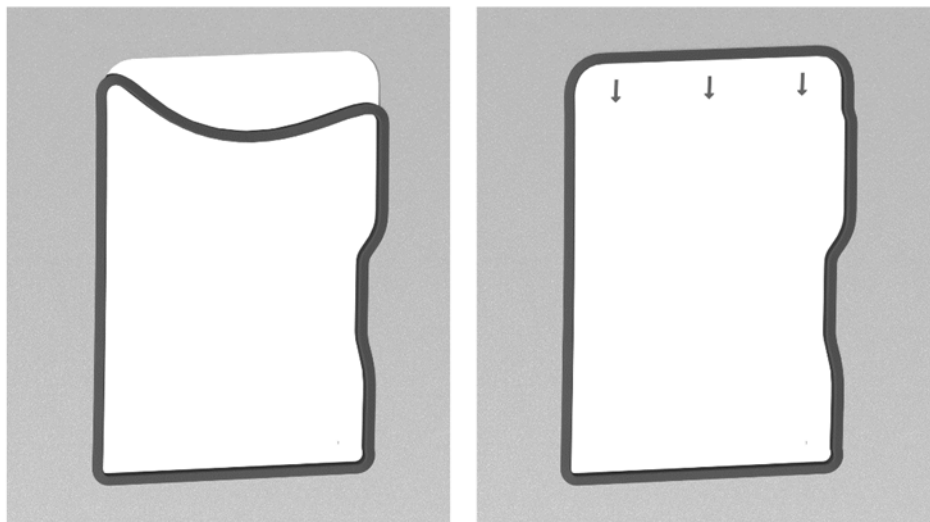
Warning: This product may only be installed by a professional.
Horrex BV is not liable for damage caused by the assembly of this product.

- 1 Remove the entry step and place the Horrex entry step. Use screws or a high-grade glue.

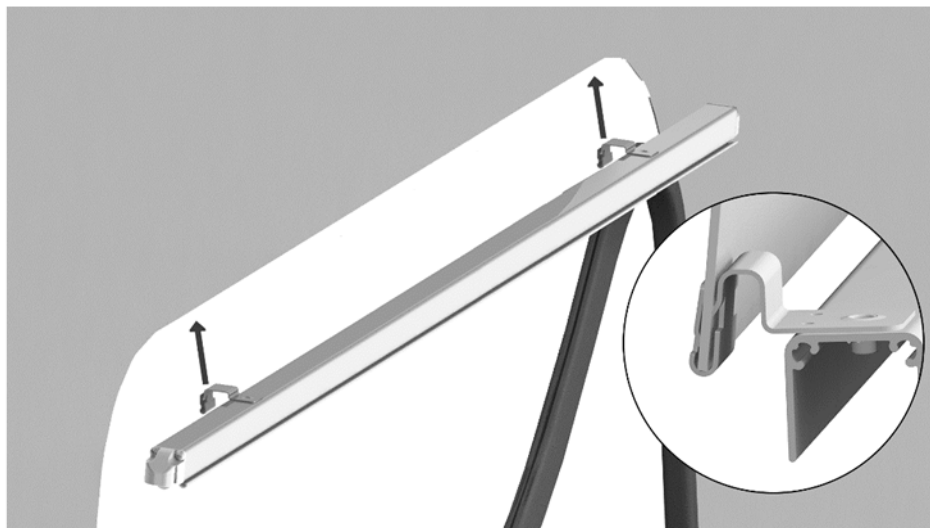




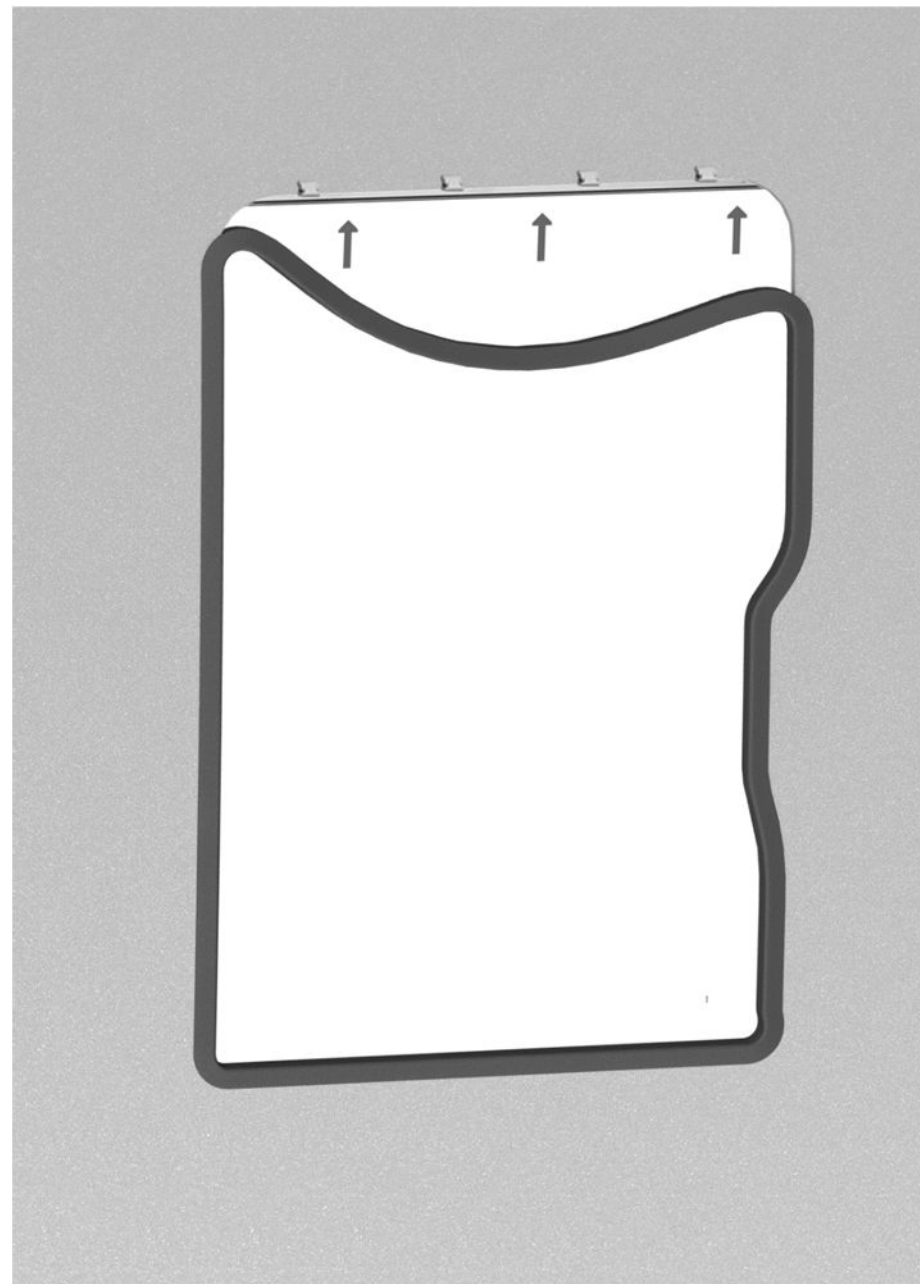
- 2 Remove the upper part of the door rubber from the body of the van.



- 3 Put the metal clips on the metal edge of the body of the van. Leave an 8mm gap between the topguider and the plastic panel in front.

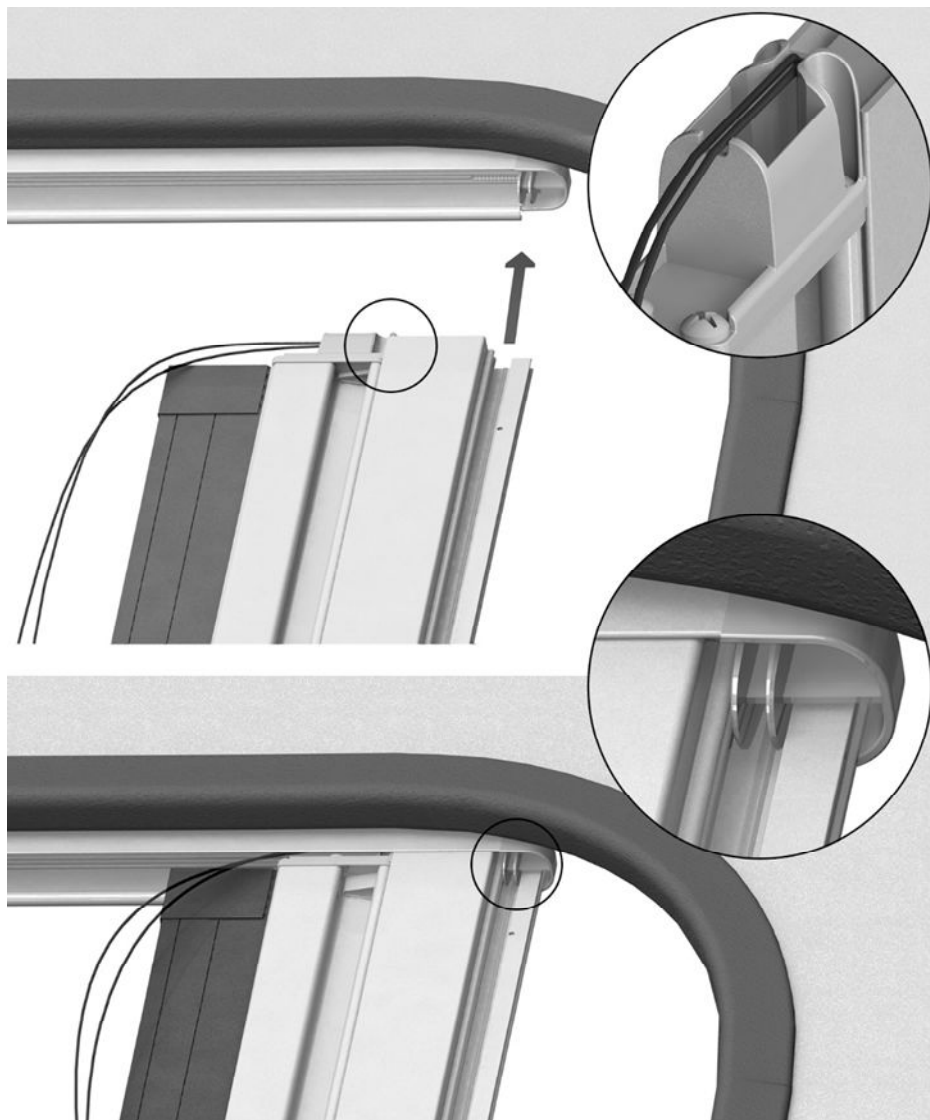


- 4 Put the rubber back onto the van.

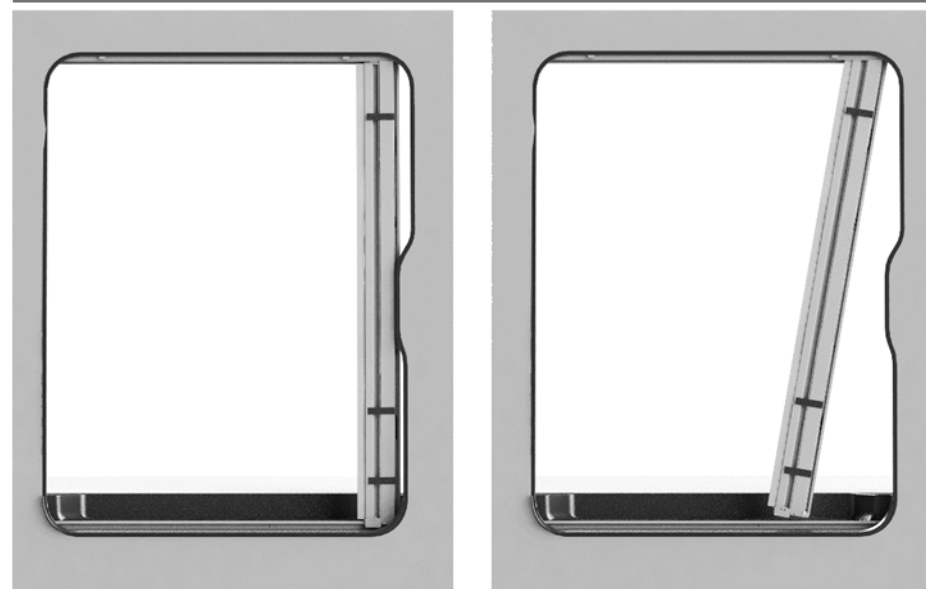




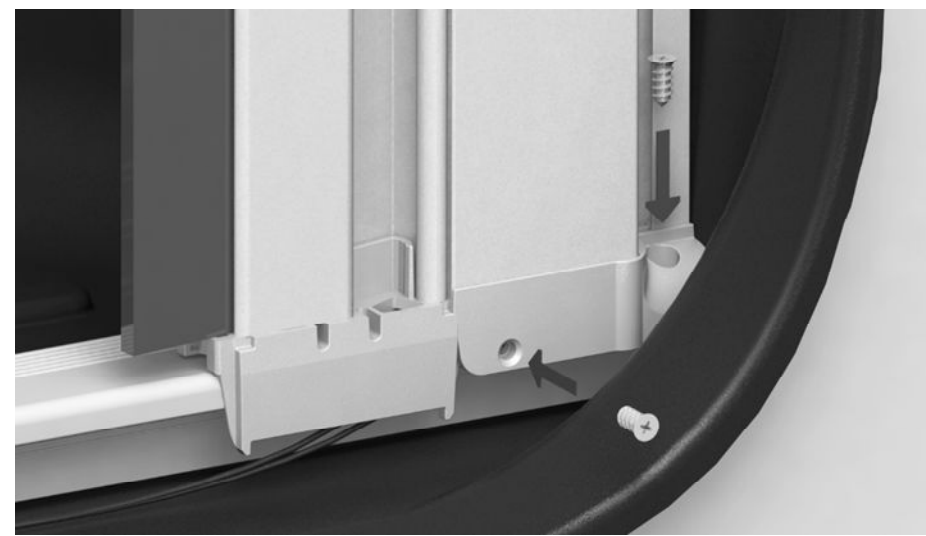
- 5 Slide the topside of the cassette and pullbar into the slot on the top profile. Make sure the cords run through the middle of the slider also make sure to leave the clips holding the cassette and pull bar together on during assembly.



- 6 Slide the bottom of the cassette and pullbar assembly into the bottom profile.



- 7 When the cassette and pullbar are vertical fasten the cassette to the bottom profile using 2 type 1 screws.





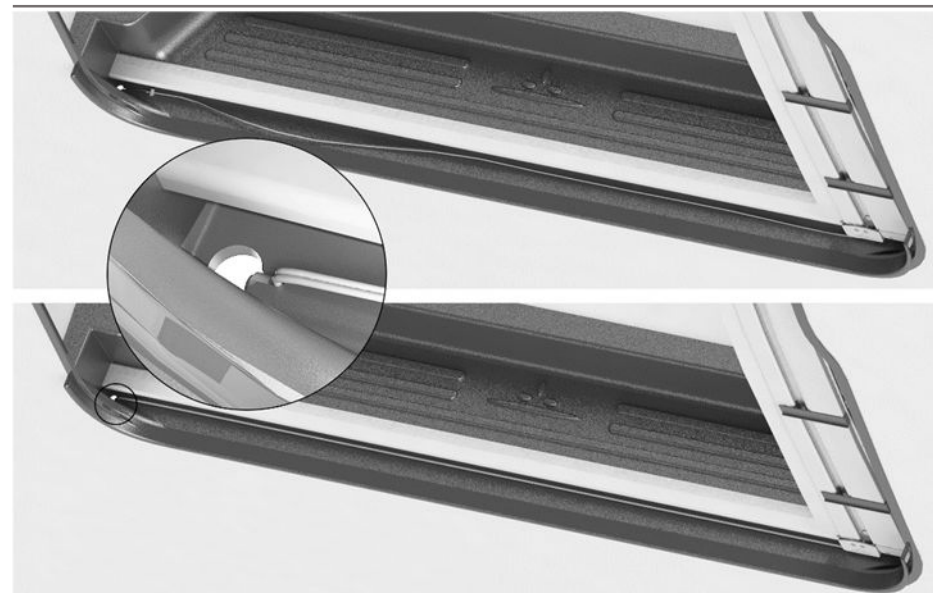
- 8 Fasten the sliderclamp to the slider with 2 type 1 screws make sure the cords are not tangled.



- 9 Check if the clearance between the pullbar and top profile is within 2-5mm.

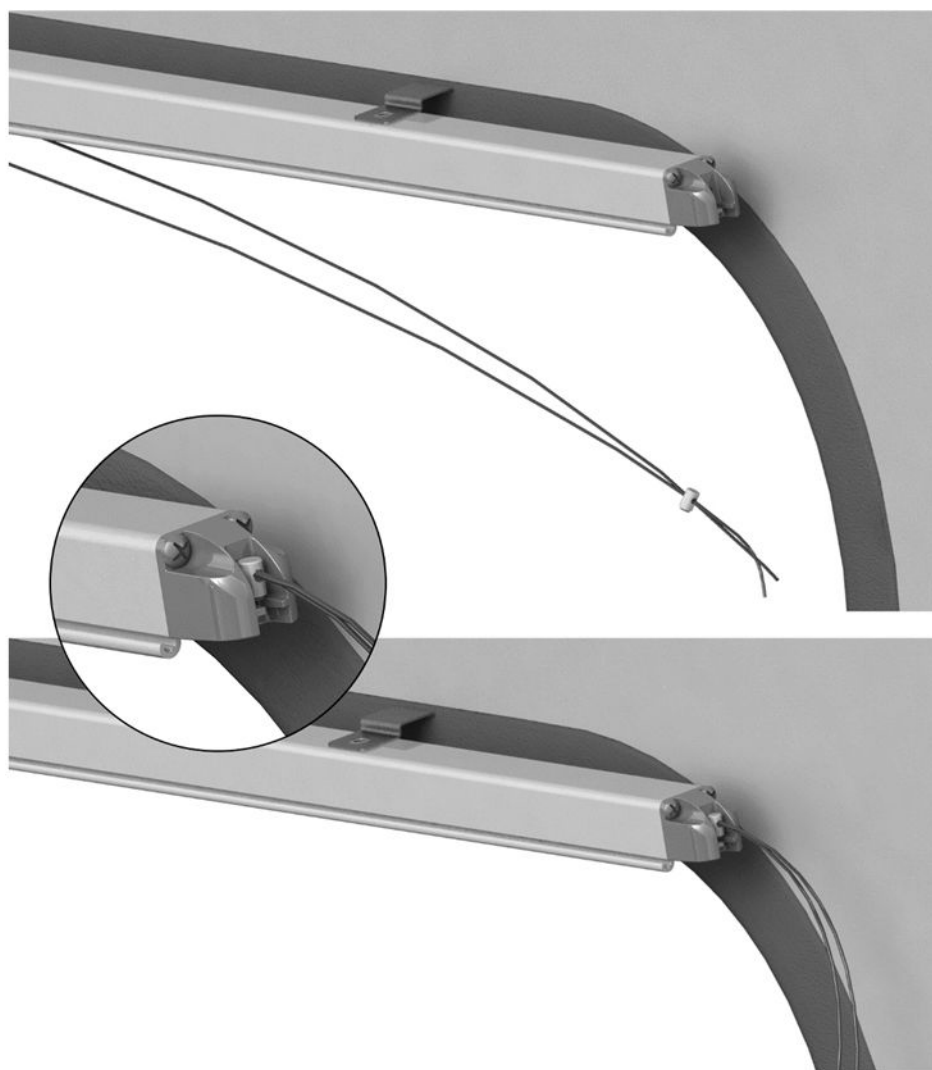


- 10 Take the slack out the cord and insert the cord tensioner as shown.





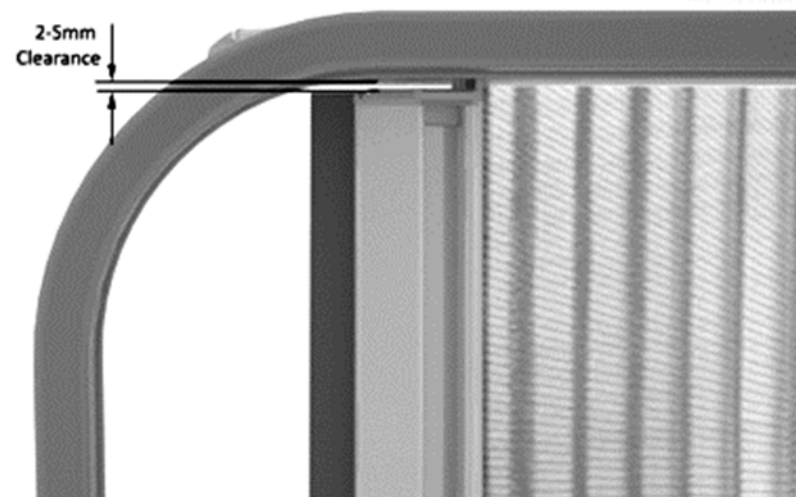
- 11** Position the top cord tensioner into the top profile endcap. And put the cords under tension.



- 12** Put the cords under tension by unscrewing the cord tensioner, pulling on the cords and fastening the cord tensioner.

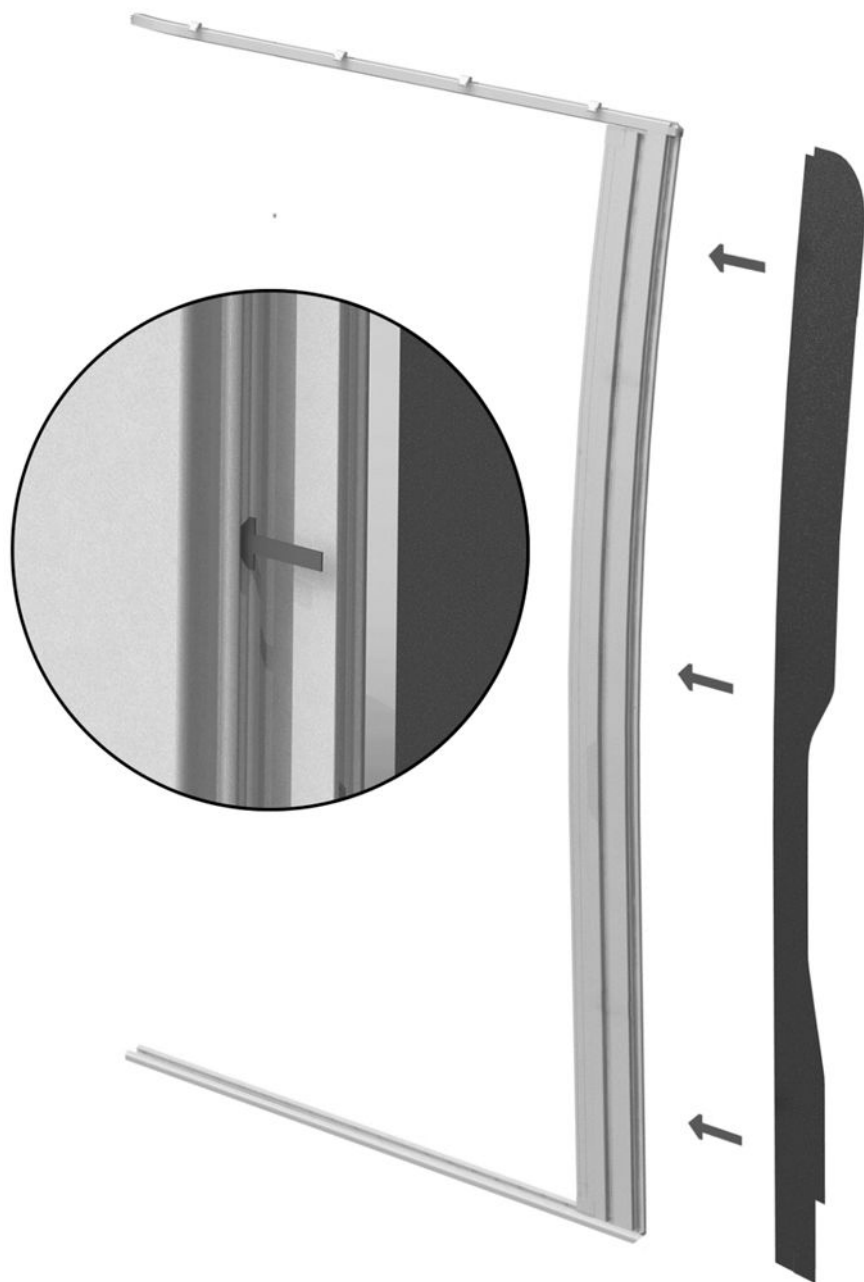


- 13** Remove the clips holding the cassette and pullbar together and test the door. Make sure the cords are not tangled.
- 14** When sliding the pullbar to the front side of the door the clearance should be within 2-5mm.



- 15** Make sure the movement of the pullbar is acceptable. To lower the resistance put both cords under less tension, to raise the resistance put both cords under more tension.
- When the pullbar is perfectly vertical and aligned with the cassette go to step 16.
- If the pullbar is angled forward put the bottom cord under more tension by sliding cord tensioner B further into the profile.
- If the pullbar is angled backward put the upper cord under more tension.

16 insert the panel in the slot.



17 Drill two holes (2,5mm) through both the panel and cassette on the top and bottom.
Fasten the panel to the cassette with 2 type 1 screws.

